

# Rotating Torque Sensors

## 01324 Series

### ROTARY SHAFT TORQUE SENSOR

These sensors are designed to measure rotating drive torque using a conventional shaft-to-shaft configuration for in-line placement. The design incorporates a coin silver slip ring assembly that transmits excitation voltage to, and output signals from, the rotating sensor. These sensors can be supplied with Auto-ID, which eliminates scaling when used with the PMAC 2000 instrument. An angle encoder and round or square housings are available with this model. Square housings have optional foot mounts.



### OPTIONS

Add "4P" for 4 pin Bendix connector (non Auto-ID)  
 Add "10P" for 10 pin Bendix connector (Auto-ID)  
 Add "Angle" for integral angle encoder (Auto-ID)

### SPECIFICATIONS

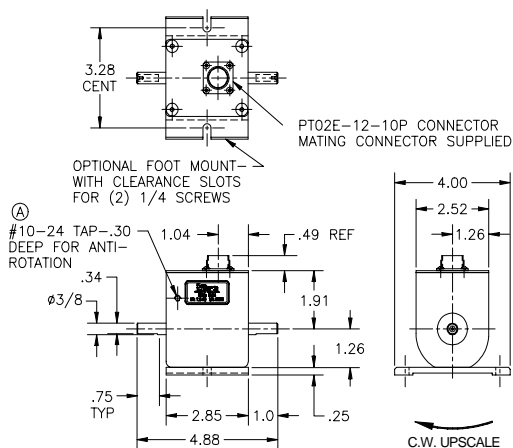
Capacity ..... 50 in. oz. to 20,000 in.lb. (See chart)  
 Overload capacity ..... 150% of F.S.  
 Output at F.S. .... 2.0 mV/V nominal  
 Non-linearity ..... 0.10% of F.S.  
 Hysteresis ..... 0.10% of F.S.  
 Zero balance ..... 1.00% of F.S.  
 Compensated temperature ..... 70 to 170°F  
 Useable temperature ..... -65 to +250°F  
 Temperature effect on zero ..... 0.002% of F.S./°F  
 Temperature effect on span ..... 0.002% of Rdg./°F  
 Bridge resistance ..... 1000 Ohms  
 Excitation voltage, maximum ..... 20 Vdc  
 Maximum shaft speed ..... 5000 RPM\*

\*For faster shaft speeds and different end configurations, please contact the factory.

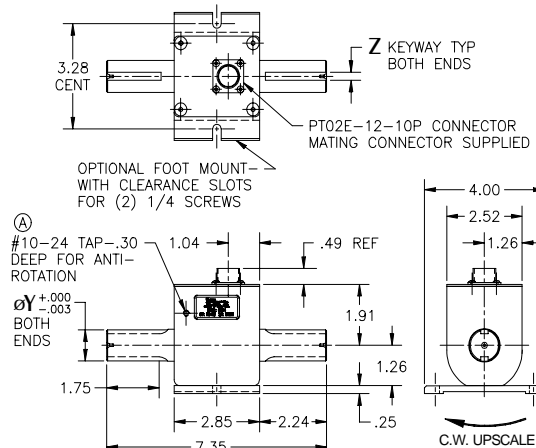
Mating connector supplied.

### DIMENSIONS

MODEL	CAPACITY			SHAFT	KEY	MATERIAL
	IN OZ.	IN LB.	NM			
01324-030	50	3	0.35	3/8	1/32 flat	Stainless steel shafts/ Aluminum sensors
01324-060	100	6	0.71			
01324-120	200	12	1.41			
01324-310	500	30	3.53			
01324-620	1000	62	7.06			
01324-012		100	12	0.749	3/16	Steel
01324-022		200	23			
01324-052		500	56	0.999	1/4	
01324-013		1000	113			
01324-023		2000	226			
01224-053		5000	565	1.499	3/8	
01224-014		10000	1130			
01224-153		15000	1700			
01224-024		20000	2260			



DWG



DWG