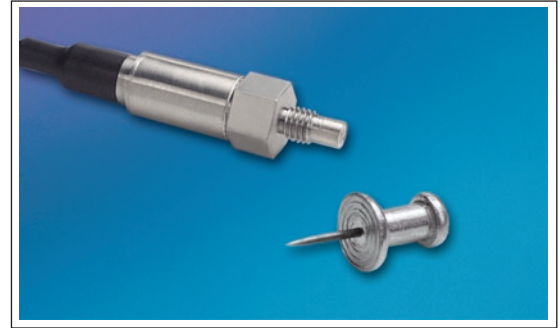




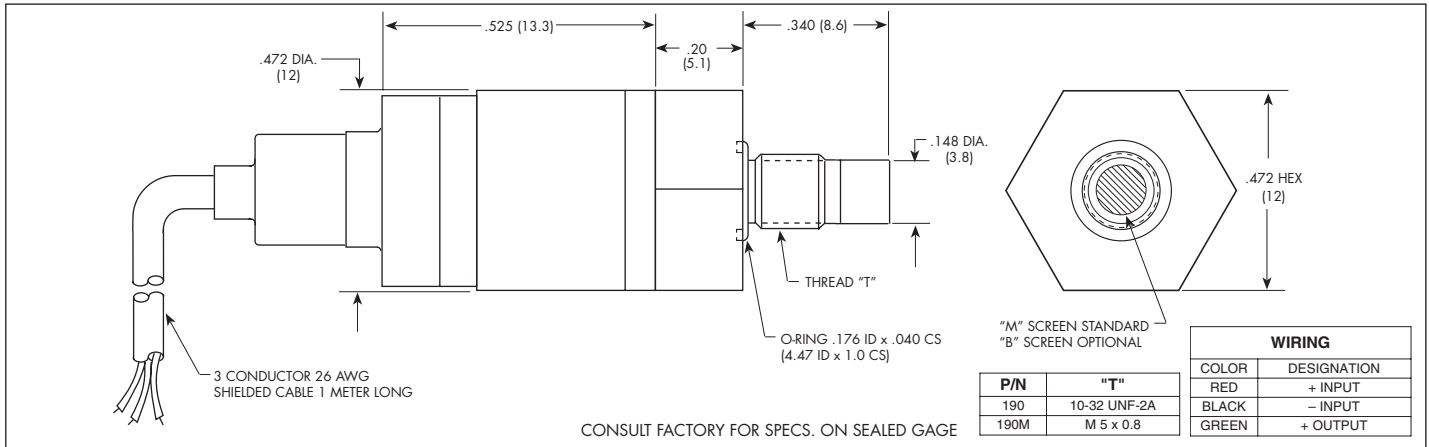
# MINIATURE 5VDC OUTPUT IS® PRESSURE TRANSDUCER

## ETL-76A-190 (M) SERIES

- Robust Construction
  - Ultra Miniature Amplified Version
  - High Temperature Capability
  - Intrinsically Safe Patented Leadless Technology
- Applications Available (i.e. IS-ETL-76A-190)



The ETL-76 Series is one of the smallest amplified transducers currently available. It incorporates the latest pressure sensing technology – Kulite's dielectrically isolated, silicon on silicon, patented leadless sensing element, which enables this device to be used in harsh environments. The ETL-76A version also has high temperature capability, being compensated over -40°F to +350°F. This transducer is the ideal choice where weight and space are at a premium.



<b>INPUT</b>	0.35	1.0	1.7	3.5	7	17	35	70	140	210 BAR
Pressure Range	5	15	25	50	100	250	500	1000	2000	3000 PSI
Operational Mode	Absolute, Sealed Gage									
Over Pressure	2 Times Rated Pressure to a Maximum of 5000 PSI (350 BAR)									
Burst Pressure	3 Times Rated Pressure to a Maximum of 5000 PSI (350 BAR)									
Pressure Media	All Nonconductive, Noncorrosive Liquids or Gases (Most Conductive Liquids and Gases - Please Consult Factory)									
Rated Electrical Excitation	12 ± 4 VDC or 28 ± 4 VDC (Reverse Polarity Protection Included)									
Maximum Electrical Current	25 mA (Max.)									
<b>OUTPUT</b>										
Output Impedance	200 Ohms (Typ.)									
Full Scale Reading	5 VDC ± 150mV									
Residual Unbalance	0.5V ± 75mV									
Combined Non-Linearity, Hysteresis and Repeatability	± 0.1% BFSL (Typ.), ± 0.5% BFSL (Max.)									
Bandwidth (-3dB)	DC to 3000 Hz									
Resolution	Infinitesimal									
Acceleration Sensitivity % FS/g										
Perpendicular	1.5x10 <sup>-3</sup>	1.0x10 <sup>-3</sup>	5.0x10 <sup>-4</sup>	3.0x10 <sup>-4</sup>	1.5x10 <sup>-4</sup>	1.0x10 <sup>-4</sup>	6.0x10 <sup>-5</sup>	4.0x10 <sup>-5</sup>	2.5x10 <sup>-5</sup>	1.9x10 <sup>-5</sup>
Transverse	2.2x10 <sup>-4</sup>	1.4x10 <sup>-4</sup>	6.0x10 <sup>-5</sup>	4.0x10 <sup>-5</sup>	2.0x10 <sup>-5</sup>	1.0x10 <sup>-5</sup>	6.0x10 <sup>-6</sup>	3.0x10 <sup>-6</sup>	3.0x10 <sup>-6</sup>	2.0x10 <sup>-6</sup>
Insulation Resistance	100 Megohm Min. @ 50 VDC									
<b>ENVIRONMENTAL</b>										
Operating Temperature Range	-65°F to +375°F (-55°C to +190°C) (Max.)									
Compensated Temperature Range	-40°F to +350°F (-40°C to +175°C)									
Thermal Zero Shift	± 1% FS/100°F (Typ.)									
Thermal Sensitivity Shift	± 1% FS/100°F (Typ.)									
Linear Vibration	50g Peak, Sine 10 to 2000 Hz									
Humidity	100% Relative Humidity									
Mechanical Shock	100g half Sine Wave 1 msec. Duation									
<b>PHYSICAL</b>										
Electrical Connection	3 Conductor 26 AWG Shielded Viton Cable 1 Meter Long									
Weight	10 Grams Excluding Cable									
Pressure Sensing Principle	Fully Active Four Arm Wheatstone Bridge Dielectrically Isolated Silicon on Silicon Patented Leadless Technology									
Mounting Torque	15 Inch-Pounds (Max.)									

Note: Custom pressure ranges, accuracies and mechanical configurations available. Dimensions are in inches. Dimensions in parenthesis are in millimeters. Continuous development and refinement of our products may result in specification changes without notice - all dimensions nominal. (L)