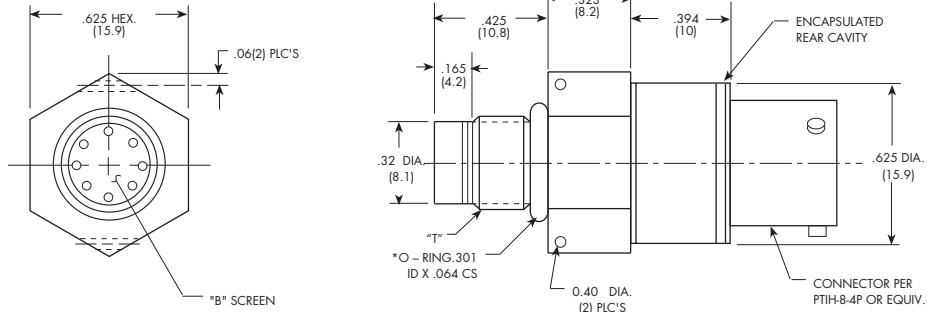




**METAL DIAPHRAGM
AUTOMOTIVE IS® PRESSURE TRANSDUCERS**

**HKM-113-375 (M) (Braking Systems)
HKM-142-375 (M) (MAP Systems)**

- Easy Installation
- High Natural Frequency
- 3/8-24 UNF 3A or M 10 x 1 Thread
- Wide Temperature Range
- Compatible With All Automotive Fluids
- Intrinsically Safe Applications Available (i.e. IS-HKM-113-375 or IS-HKM-142-375)



P/N	"T"
375	3/8-24 UNJF-3A
375M	M 10 x 1

CONSULT FACTORY FOR SPECS. ON SEALED GAGE * NOTE: O-RING TYPE - (HKM-113-375 EPDM) (HKM-142-375 VITON)

WIRING	
PIN	DESIGNATION
A	+ INPUT
B	- INPUT
C	+ OUTPUT
D	- OUTPUT

INPUT	HKM-113-375				HKM-142-375			
	Pressure Range	1.0 15	1.7 25	3.5 50	7 100	17 250	35 500	70 1000
Operational Mode	Absolute, Sealed Gage							
Over Pressure	2 Times Rated Pressure							
Burst Pressure	3 Times Rated Pressure							
Pressure Media	Any Liquid or Gas Compatible With 15-5 PH or 316 SS							
Rated Electrical Excitation	10 VDC							
Maximum Electrical Excitation	15 VDC							
Input Impedance	1000 Ohms (Min.)							
OUTPUT								
Output Impedance	1000 Ohms (Nom.)							
Full Scale Output (FSO)	100 mV (Nom.)							
Residual Unbalance	± 5 mV (Typ.)							
Combined Non-Linearity, Hysteresis and Repeatability	± 0.1% FSO BFSL (Typ.), ± 0.5% FSO (Max.)							
Resolution	Infinitesimal							
Natural Frequency (KHz)	Greater Than 175 KHz							
Acceleration Sensitivity % FS/g Perpendicular Transverse	6.5x10 ⁻⁴ 1.0x10 ⁻⁴	4.5x10 ⁻⁴ 6.0x10 ⁻⁵	3.0x10 ⁻⁴ 3.0x10 ⁻⁵	2.0x10 ⁻⁴ 2.0x10 ⁻⁵	1.0x10 ⁻⁴ 1.0x10 ⁻⁵	6.0x10 ⁻⁵ 6.0x10 ⁻⁶	4.0x10 ⁻⁵ 4.0x10 ⁻⁶	2.0x10 ⁻⁵ 2.0x10 ⁻⁶
Insulation Resistance	100 Megohm Min. @ 50 VDC							
ENVIRONMENTAL								
Operating Temperature Range	-65°F to +400°F (-55°C to +204°C)							
Compensated Temperature Range	-40°F to +350°F (-40°C to +175°C)				-40°F to +250°F (-40°C to +120°C)			
Thermal Zero Shift	± 1% FS/100°F (Typ.)							
Thermal Sensitivity Shift	± 1% /100°F (Typ.)							
Steady Acceleration and Linear Vibration	100g Peak, Sine up to 5000 Hz							
Humidity	100% Relative Humidity							
Mechanical Shock	100g half Sine Wave 1 msec. Duration							
PHYSICAL								
Electrical Connection	PTIH-8-4P Connector or Equivalent							
Weight	21 Grams Excluding Cable							
Pressure Sensing Principle	Fully Active Four Arm Wheatstone Bridge Dielectrically Isolated Silicon on Silicon							
Mounting Torque	80 Inch-Pounds							

Note: Custom pressure ranges, accuracies and mechanical configurations available. Dimensions are in inches. Dimensions in parenthesis are in millimeters. Continuous development and refinement of our products may result in specification changes without notice - all dimensions nominal. (I)