

DMi Model: XLBC

## CANTILEVER LOAD BEAM



### PERFORMANCE SPECIFICATIONS (FSO is Full Scale Output)

EXCITATION: 10 VDC, 15 VDC Max  
 OUTPUT: 3 mV/V  $\pm$ .0075 mV/V  
 BRIDGE RESISTANCE: 350 ohms

LINEARITY:  $\pm$ 0.03% FSO  
 HYSTERESIS:  $\pm$ 0.02% FSO  
 REPEATABILITY:  $\pm$ 0.02% FSO  
 ZERO BALANCE:  $\pm$ 1.0% FSO

OPERATING TEMP RANGE: -30 to +180 °F (-34 to +82 °C)  
 COMPENSATED TEMP RANGE: +60 to +160 °F (+15 to +71 °C)

THERMAL EFFECTS:  
 on Zero  $\pm$ 0.0015% FSO/ °F  
 on Span  $\pm$ 0.0008% Reading/ °F

SAFE OVERLOAD: 150% of Capacity  
 ULTIMATE OVERLOAD: 300% of Capacity

MATERIAL: Stainless Steel

15 FT 4-CONDUCTOR CABLE  
 WIRING CODE:

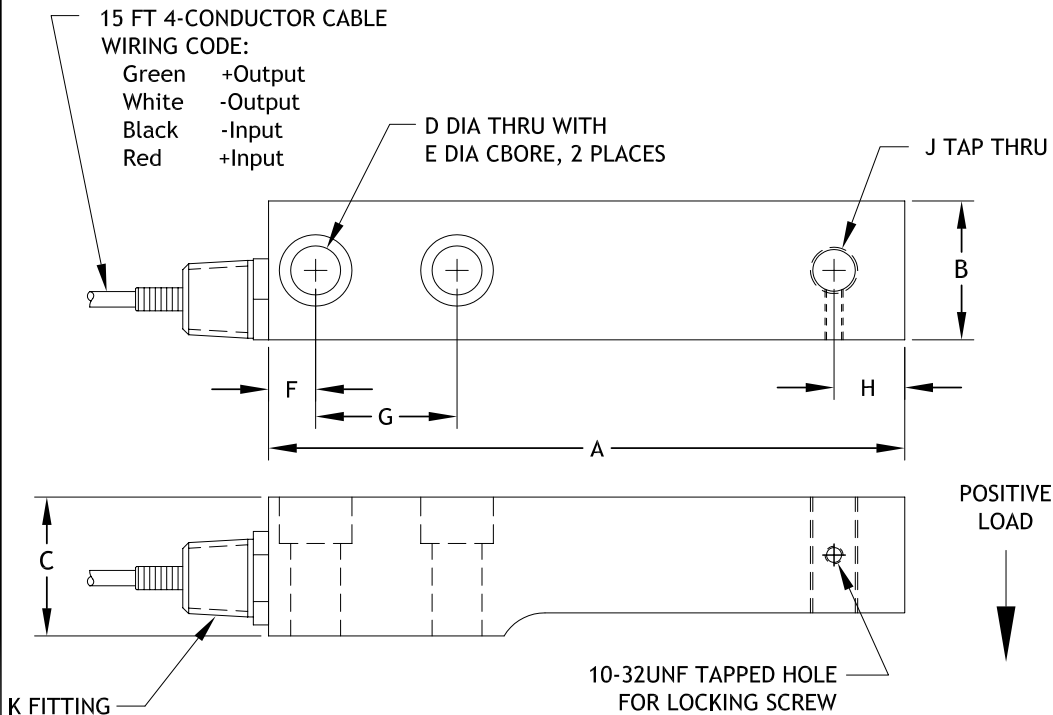
Green +Output  
 White -Output  
 Black -Input  
 Red +Input

D DIA THRU WITH  
 E DIA CBORE, 2 PLACES

J TAP THRU

### PART NUMBER EXAMPLES:

PART NUMBER	CAPACITY(LBS)
XLBC-0100	100
XLBC-001K	1,000
XLBC-010K	10,000



RANGES	A	B	C	D	E	F	G	H	J	K
100 to 750 lbs	4.75	1.0	1.0	.39	.59	.50	1.00	.75	1/2-20UNF	3/8-18NPT
1000 to 5000 lbs	6.75	1.25	1.5	.53	.77	.50	1.50	1.00	1/2-20UNF	1/2-14NPT
10,000 lbs	7.75	1.5	1.5	.77	NA	.75	2.00	1.00	3/4-16UNF	1/2-14NPT

All dimensions are inches, unless otherwise noted.