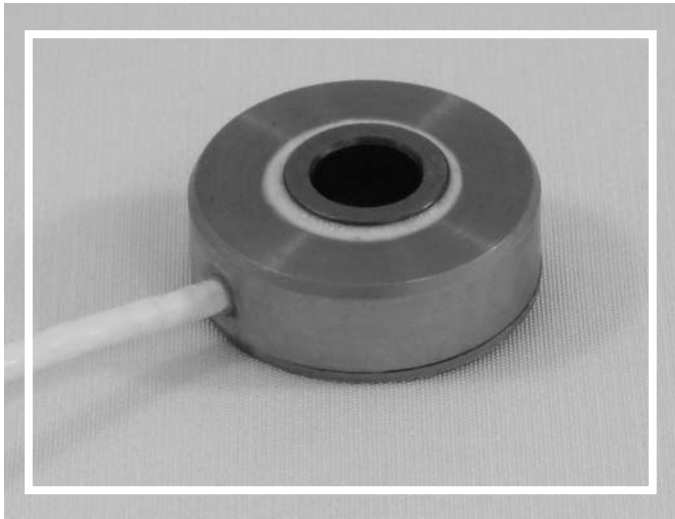


DMi Model: XLD050 and XLD075

SUBMINIATURE DONUT LOAD CELL



PERFORMANCE SPECIFICATIONS (FSO is Full Scale Output)

EXCITATION: 5 VDC
 OUTPUT: 20 mV/V Nominal
 BRIDGE RESISTANCE: 500 ohms (Semiconductor)

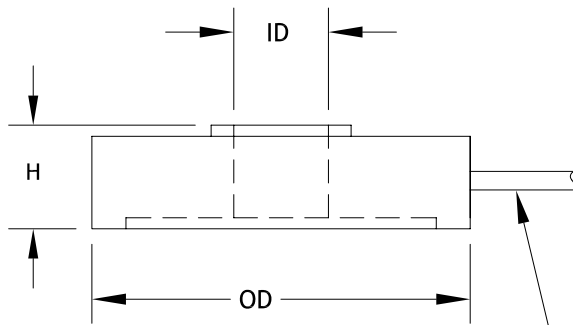
LINEARITY: }
 HYSTERESIS: } ±1.0% FSO, Combined
 REPEATABILITY: }
 ZERO BALANCE: ±2.0% FSO

OPERATING TEMP RANGE: -20 to +200°F (-29 to +93°C)
 COMPENSATED TEMP RANGE: +60 to +160°F (+15 to +71°C)

THERMAL EFFECTS:
 on Zero ±0.01% FSO/°F
 on Span ±0.02% Reading/°F

SAFE OVERLOAD: 150% of Capacity
 ULTIMATE OVERLOAD: 300% of Capacity

CASING MATERIAL: Stainless Steel

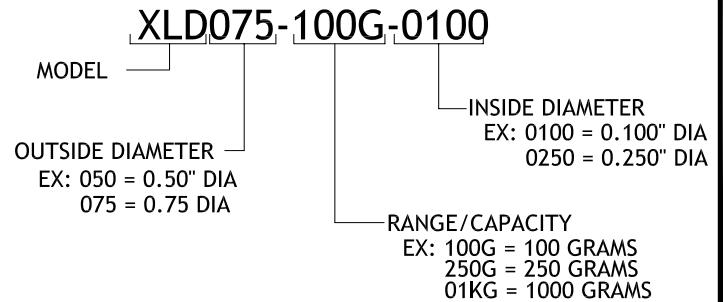


5FT OF 4-CONDUCTOR CABLE

White +Output
 Green -Output
 Black -Input
 Red +Input

HOW TO ORDER:

(NOTE: NOT ALL COMBINATIONS ARE POSSIBLE, SEE CHART BELOW)



MODEL	RANGES	OD	H	ID THRU HOLE
XLD050	100 to 1000 grams	.50	.15	.100 DIA
XLD075	100 to 1000 grams	.75	.25	.100 DIA to .250 DIA

All dimensions are inches, unless otherwise noted.