

DMi Model: XLD100 - XLD125

MINIATURE DONUT LOAD CELLS



PERFORMANCE SPECIFICATIONS (FSO is Full Scale Output)

EXCITATION: 10 VDC, 15 VDC Max
 OUTPUT: 2 mV/V Nominal
 BRIDGE RESISTANCE: 350 ohms

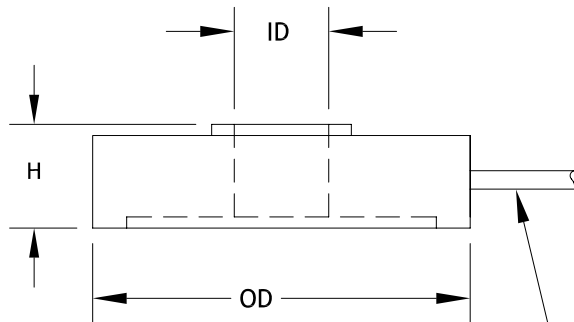
LINEARITY: }
 HYSTERESIS: } ±1.0% FSO, Combined
 REPEATABILITY: }
 ZERO BALANCE: ±2.0% FSO

OPERATING TEMP RANGE: -65 to +250°F (-54 to +121°C)
 COMPENSATED TEMP RANGE: +60 to +160°F (+15 to +71°C)

THERMAL EFFECTS:
 on Zero ±0.005% FSO/°F
 on Span ±0.010% Reading/°F

SAFE OVERLOAD: 150% of Capacity
 ULTIMATE OVERLOAD: 300% of Capacity

CASING MATERIAL: Stainless Steel

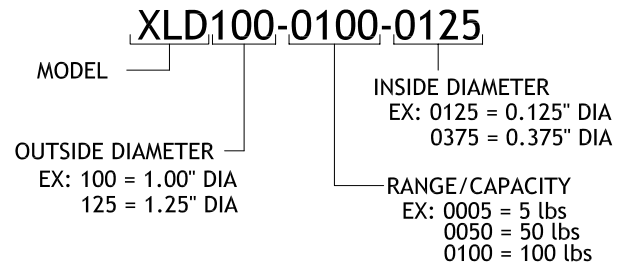


5FT OF 4-CONDUCTOR CABLE

White +Output
 Green -Output
 Black -Input
 Red +Input

HOW TO ORDER:

(NOTE: NOT ALL COMBINATIONS ARE POSSIBLE, SEE CHART BELOW)



MODEL	RANGES	OD	H	ID THRU HOLE
XLD100	5 to 200 lbs	1.00	.28	.100 DIA to .250 DIA
XLD125	25 to 500 lbs	1.25	.25	.100 DIA to .375 DIA

All dimensions are inches, unless otherwise noted.