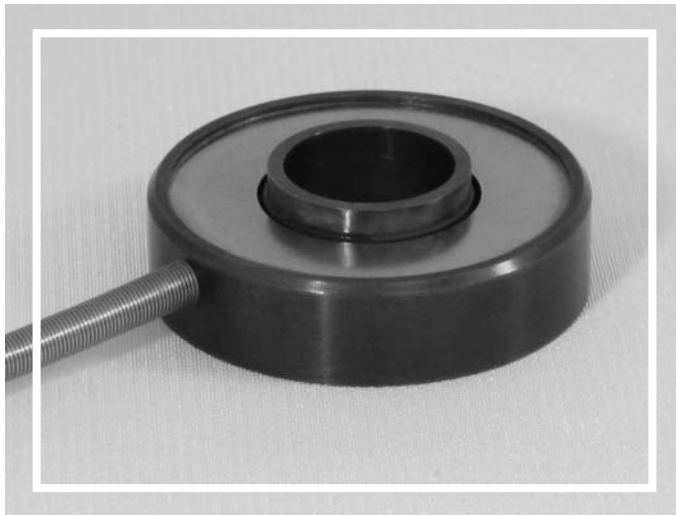


DMi Model: XLD150 - XLD300

DONUT LOAD CELLS



PERFORMANCE SPECIFICATIONS (FSO is Full Scale Output)

EXCITATION: 10 VDC, 15 VDC Max
 OUTPUT: 2 mV/V Nominal
 BRIDGE RESISTANCE: 350 ohms

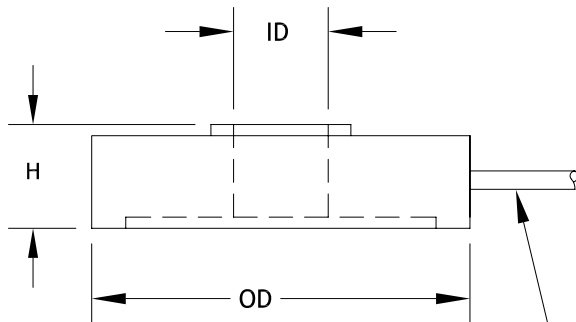
LINEARITY: } ±0.5% FSO, Combined
 HYSTERESIS: }
 REPEATABILITY: ±0.1% FSO
 ZERO BALANCE: ±2.0% FSO

OPERATING TEMP RANGE: -65 to +250°F (-54 to +121°C)
 COMPENSATED TEMP RANGE: +60 to +160°F (+15 to +71°C)

THERMAL EFFECTS:
 on Zero ±0.005% FSO/°F
 on Span ±0.010% Reading/°F

SAFE OVERLOAD: 150% of Capacity
 ULTIMATE OVERLOAD: 300% of Capacity

CASING MATERIAL: Stainless Steel

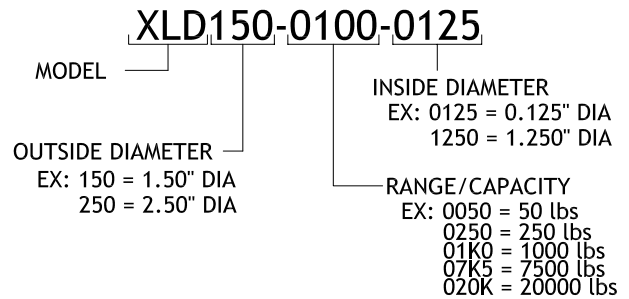


5FT OF 4-CONDUCTOR CABLE

White +Output
 Green -Output
 Black -Input
 Red +Input

HOW TO ORDER:

(NOTE: NOT ALL COMBINATIONS ARE POSSIBLE, SEE CHART BELOW)



MODEL	RANGES	OD	H	ID THRU HOLE
XLD150	100 to 5000 lbs	1.50	.50	.100 DIA to .500 DIA
XLD200	5 to 10,000 lbs	2.00	.37	.125 DIA to .625 DIA
XLD200	250 to 10,000 lbs	2.00	.63	.125 DIA to 1.00 DIA
XLD250	1000 to 100,000 lbs	2.50	1.00	.250 DIA to 1.50 DIA
XLD300	1000 to 100,000 lbs	3.00	1.00	.250 DIA to 1.50 DIA

All dimensions are inches, unless otherwise noted.