

NEW! Press Force Monitoring updates

Miniature and Industrial Force Sensors

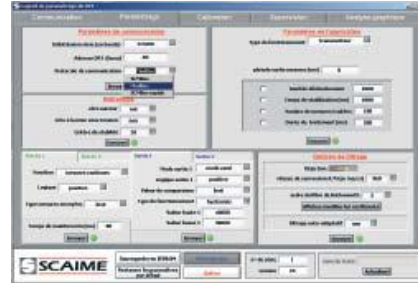


Precision Displacement Sensors



Force Sensor Digital Conditioner with Ethernet IP output communication

- Strain Gauge Input with 24 bit A/D
- Configurable output 10V or 4-20mA
- User Selectable Digital Smoothing
- Opt. Digital I/O controlled by PLC
- Optional 4 or 6 inch display
- Free configuration software



DigiForce X-Y Press Force Monitor

- Touch-screen Display
- On-Screen Configuration
- Password Protected
- Force Sensor Inputs: Vdc, Strain Gauge or Piezo
- Displacement Input: Potentiometer or Encoder
- 10,000 samples per second capable
- Ethernet IP optional
- Data Communication through EIP to PLC
- Support for SQL DataBase from PLC

9311 Ethernet IP output & NEW Quadrature Encoder Input

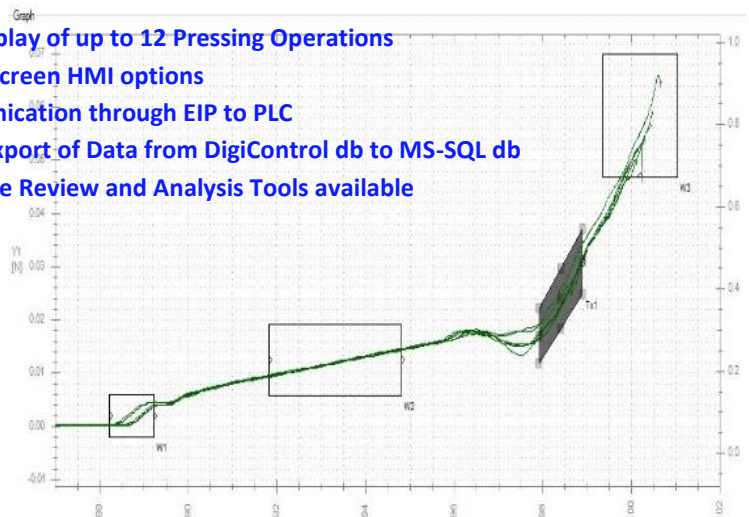


Microsoft SQL DataBase support

Name	Data Type	Description
UD_DIG9311_IN		
OUT_READY	BOOL	
OUT_OK	BOOL	
OUT_NOK	BOOL	
OUT_NOK_ONL	BOOL	
OUT_SI	BOOL	
OUT_S2	BOOL	
OUT_OK_STEST	BOOL	
OUT_OK_MEAS_ACT	BOOL	
OUT_STROBE	BOOL	
OUT_PROG0	BOOL	
OUT_PROG1	BOOL	
OUT_PROG2	BOOL	
res2_4	BOOL	
res2_5	BOOL	
res2_6	BOOL	
res2_7	BOOL	
Global_NOK	BOOL	
Overload_NOK	BOOL	
Window_1_NOK	BOOL	
Window_2_NOK	BOOL	
Window_3_NOK	BOOL	
Threshold_1_NOK	BOOL	
Threshold_2_NOK	BOOL	
Trapezoid_1_NOK	BOOL	
Trapezoid_2_NOK	BOOL	
Envelope_NOK	BOOL	
Measure_wv_Ready	BOOL	
USB_Log_Error	BOOL	
res_4_4	BOOL	
res_4_5	BOOL	
res_4_6	BOOL	
res_4_7	BOOL	
USR_VAL1	REAL	
USR_VAL2	REAL	

Control Software

- Graphical Display of up to 12 Pressing Operations
- Local Touch-Screen HMI options
- Data Communication through EIP to PLC
- Concurrent Export of Data from DigiControl db to MS-SQL db
- Multiple Curve Review and Analysis Tools available



NEW Servo Press Models

Maximum Force in kN by Tool Model No.



Tool Model No.	MS02	CS05	CS10	CS20	CS30	CS50	MS50**	CS55***	CS80***	MS100**	MS200
Max. Force kN	2	5	10	20	30	50	50	55	80	100	200
Cyclic* Force kN	1.5	3	7	14	21	40	45	45	70	70	150
Stroke Length mm	100	100/250		100/200/350						100/200	
Specials mm		150		400						300	
Max. Speed mm/s	225	300	180	270	240	150	250	200	130	150	110

* recommended maximum cyclic Force for minimum tool wear
 CS50, CS55, MS50, CS80 & MS100 Servo Presses, all have the same bolt pattern for ease of design and interchangeability

Force Verification, Transfer Standard and Diagnostics Meter

7281-V0004 shown

Device test/
Strain gauge simulator

Infinitely adjustable simulation values:
up to ± 50 mV/V, up to 10 VDC
Measurement: U_{apply} to 10 VDC



Reference measurement chain
(combined with a reference sensor)



Hand-Held Meter options

7281-V0000:

- Force Sensor Indicator
- TEDS capable
- Rechargeable Batteries
- Carrying Case & Charger

7281-V0004:

- Force Sensor Indicator
- TEDS capable
- Sensor Diagnostics Tool
- Strain Gauge Simulator Output
- Rechargeable Batteries
- Carrying Case & Charger

Note : Sensors Sold Separately